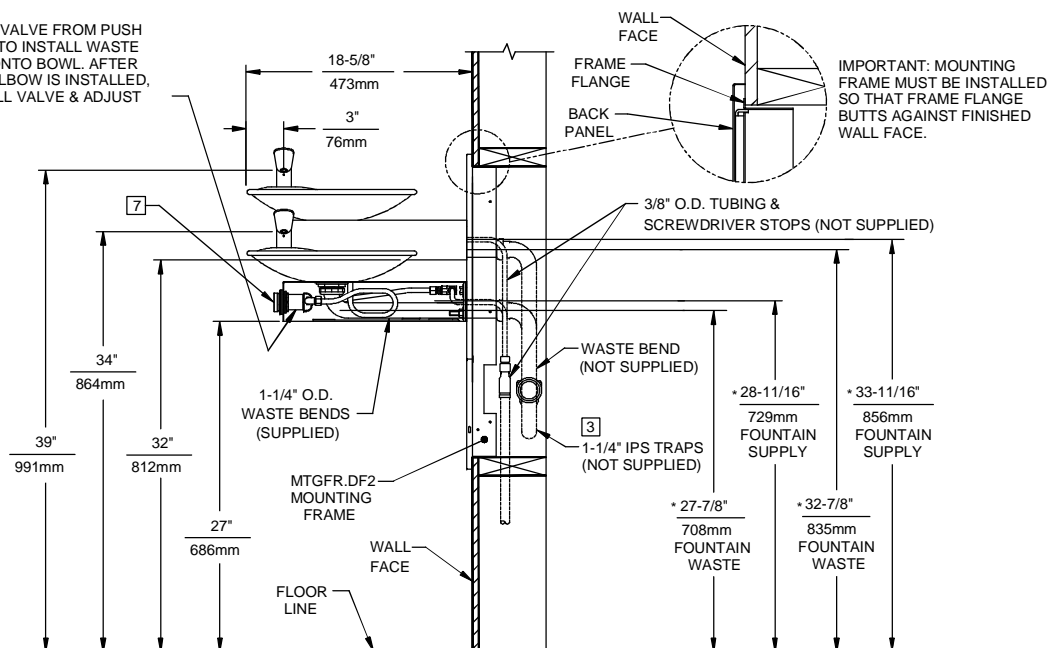


7 REFER TO 5874SS OPERATION AND MAINTENANCE MANUAL FOR PUSH BUTTON AND VALVE INSTALLATION/MAINTENANCE INSTRUCTIONS.

REMOVE VALVE FROM PUSH
BUTTON TO INSTALL WASTE
ELBOW ONTO BOWL. AFTER
WASTE ELBOW IS INSTALLED,
REINSTALL VALVE & ADJUST
FLOW



1455 KLEPPE LANE
SPARKS, NEVADA 89431
(775) 359-4712 FAX (775) 359-7424
E-MAIL: HAWS@HAWSCO.COM
WEBSITE: WWW.HAWSCO.COM

ECN NO.	REVISED PER	BY:	MODEL(S)				PART NUMBER			
DRAWN:	ECN: 4828	HM	1011HPSMS/1011MS DRAWING FOR TAIN				0002076519.D			
PM	DATE:	CHKD.					DRAWING NO.		REV	
	08/02/99						14219C00		9	
APPROVED:	DATE:		SCALE: 1:16	DRAWING TYPE:	INSTALLATION	SIZE: A	SHEET 1 OF 1			