

# Duplicate a Layer

By duplicating a layer, you can manipulate elements in an image while keeping a copy of their original state. Duplicating a layer creates a new layer. You can repeat the duplicate command to create many copies of objects in your image, and then use the Move command to arrange the copies. For more, see the previous section, “Move a Layer.”

When you duplicate a layer, the elements in that layer appear in the same position as in the original layer. Unless you change the position of elements in one of the two layers, one layer covers the content in the other layer.

## Duplicate a Layer

- 1 In the Editor, click **Expert**.
- 2 Click **Layers** to open the Layers panel.

**Note:** For more on opening the Editor or panels, see Chapter 1.

- 3 Click a layer.
- 4 Click and drag the layer to the **Create a New Layer** icon (□).

**Note:** Alternatively, you can click **Layer** and then **Duplicate Layer**; a dialog box opens, asking you to name the layer you want to duplicate.

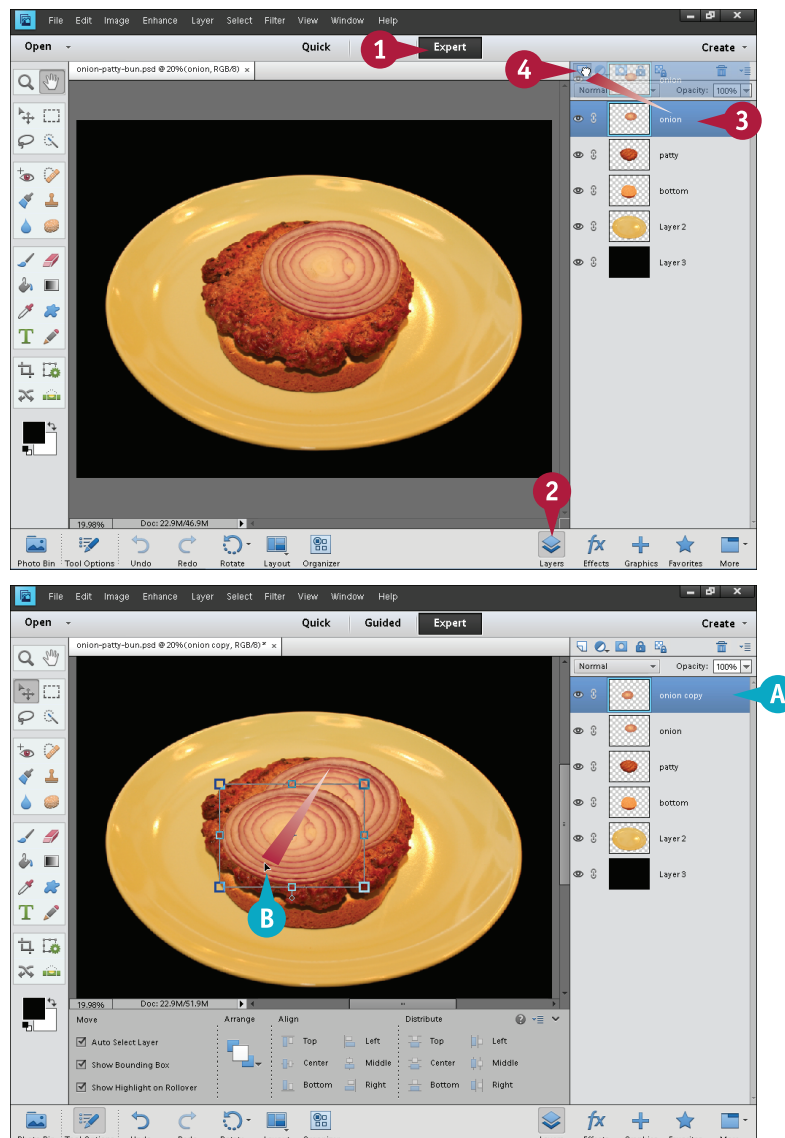
You can also press **Ctrl** + **J** (⌘ + **J** on a Mac) to duplicate a selected layer in the Layers panel.

**Note:** If you have selected an area of the layer, only the selected area will be duplicated.

- A Photoshop Elements duplicates the selected layer.

**Note:** To rename the duplicate layer, see the section “Rename a Layer.”

- B You can test that Photoshop Elements has duplicated the layer by selecting the new layer, clicking the **Move** tool (⇧), and clicking and dragging the layer.



# Delete a Layer

You can delete a layer when you no longer have a use for its contents. After deleting a layer, the layer no longer appears in the Layers panel and its content disappears from your image.

An alternative to deleting a layer is to hide it. Hiding a layer keeps the layer content in your image but does not display it in the image window. For more details, see the section “Hide a Layer.”

To undo the deletion of a layer, you can click **Undo** in the taskbar or press **Ctrl+Z** (**⌘+Z** on a Mac). For more about undoing commands, see Chapter 5.

## Delete a Layer

1 In the Editor, click **Expert**.

2 Click **Layers** to open the Layers panel.

**Note:** For more on opening the Editor or panels, see Chapter 1.

3 Click a layer.

4 Click and drag the layer to the trash can icon (🗑️).

**Note:** Alternatively, you can click **Layer** and then **Delete Layer**, or you can select a layer and then click the trash can icon (🗑️). In both cases, a confirmation dialog box opens.

Photoshop Elements deletes the selected layer, and the content in the layer disappears from the image window.

**Note:** You can also hide a layer. See the section “Hide a Layer” for more.

