



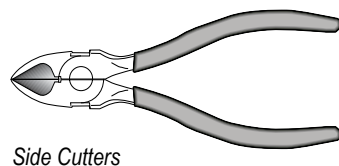
## SATELLITE RADIO INSTALLATION GUIDE

**Difficulty Level:** Easy to Moderate

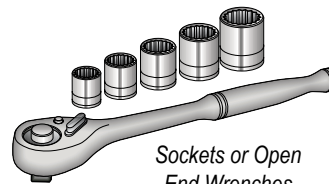
**Average Installation Time:** 1-2 Hours

**In This Guide:** Satellite radio installation involves installing an antenna and satellite radio tuner. Receivers that are "Sirius XM Ready" provide the control of the tuner. Otherwise, a separate control panel can be installed to control the satellite tuner independent of the receiver. Use an FM transmitter, AUX input, or a direct connection method to connect the tuner's audio output to the vehicle's sound system.

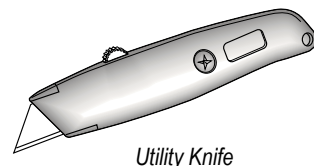
### Tools and Supplies Needed:



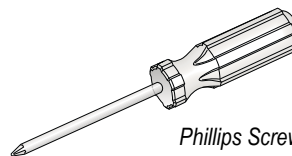
Side Cutters



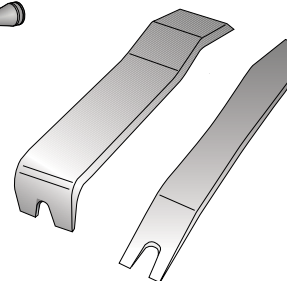
Sockets or Open End Wrenches



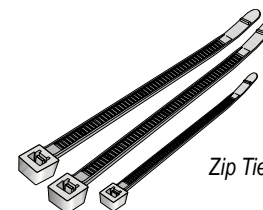
Utility Knife



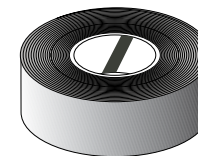
Phillips Screwdriver



Panel Removal Tools



Zip Ties



Electrical Tape



### Important

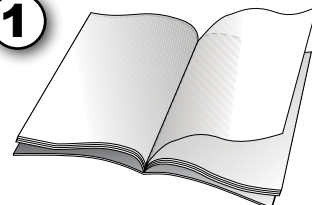
This content has not been verified by Amazon for accuracy, completeness, or otherwise. Consult your vehicle's owner's manual and the product's manual before attempting an installation. Contact the product's manufacturer or consult a Mobile Electronics Certified Professional installer if you are uncertain about how to properly install your product. Amazon attempts to be as accurate as possible, however, because of the number of vehicles and products available to consumers, it is not possible to provide detailed installation steps that apply universally to all vehicles and products. Amazon does not warrant that product descriptions or other content of this site is accurate, complete, reliable, current, or error-free. Further, Amazon disclaims any warranties, express or implied, as further set forth in the 'Conditions of Use' for Amazon.com.



### Before You Begin

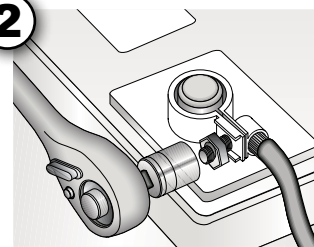
1

Product Owner's Manual  
Installation Manual(s)



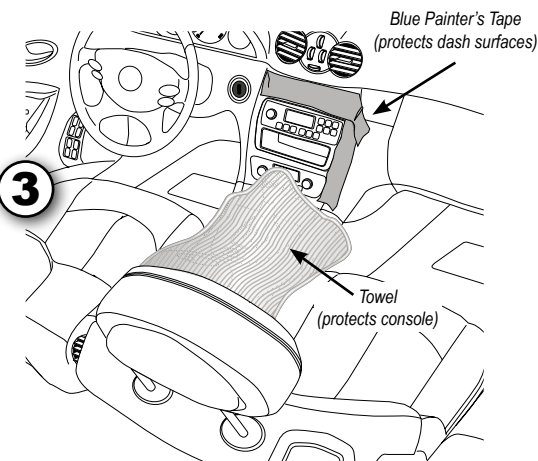
Read all instructions carefully

2



Disconnect the negative battery cable

3



Protect interior surfaces

**Note:** Additional accessories such as auxiliary audio cables, antenna adapters, or controller mounts may be required to complete the installation and are available for purchase on Amazon.com.

## Satellite Radio Choices

### Plug and Play Units

Satellite radio programming can be added to any vehicle with a 'Plug and Play' unit. Plug and Play units feature a stand-alone control panel which provides channel selection, display of channel information and all the necessary connections required to receive a satellite radio broadcast. The controller mounts to the dash or console with supplied brackets. Power is sourced from the cigarette lighter with a cigarette lighter adapter. Some Plug and Play units can be hardwired to the vehicle's electrical system. Satellite radio content can be played over an existing FM station or through an available preamp level AUX input, which may require additional parts like a cable or input adapter.



*Plug and Play Unit on a vent clip mount*

### In-Dash Receiver w/Add-On Tuner

A "Sirius XM Ready" or "Satellite Radio Ready" in-dash receiver is the best method to add satellite radio. A dedicated satellite radio tuner (purchased separately) connects directly to the receiver. This option also uses a preamp level audio connection for the best sound quality. The in-dash receiver controls channel selection and displays channel/content information, so no additional display/control panel is needed.

*In-Dash Receiver (Back View)*

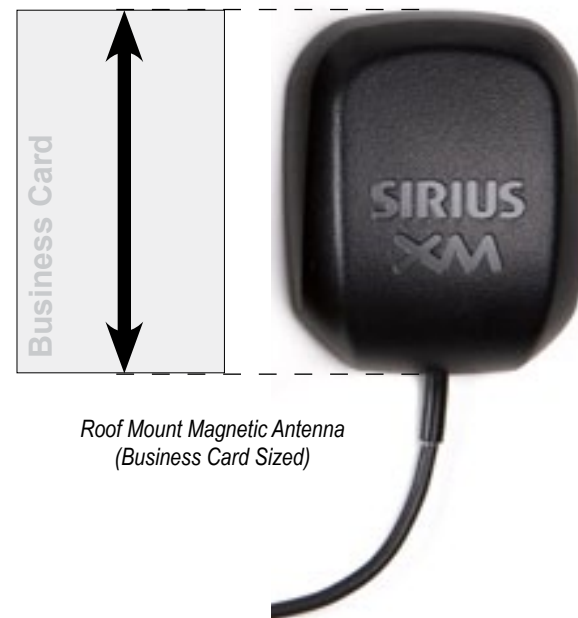


*Add-On Satellite Radio Tuner*



### Antenna Requirements

All vehicles require a separate antenna to receive satellite radio content. The antenna receives both the satellite and the land-based terrestrial repeater signals. Most satellite antennas are flat, similar in size to a business card, and attach magnetically or with adhesives. There are also specialty mast-style antennas for commercial vehicles, boats and RVs. The antenna should be positioned so that it has a good line of sight to the sky, allowing the antenna to receive signal from both satellites and terrestrial repeaters. Follow the manufacturer's recommended placement for your type of vehicle as indicated in the antenna installation instructions.



*Roof Mount Magnetic Antenna  
(Business Card Sized)*

## General Guidelines for Satellite Radio Installations

Proper installation of the satellite radio antenna is important to ensure signal reception. The majority of satellite radio reception problems are caused by improper antenna installation, which may cause the satellite radio controller to display messages like “Acquiring Signal” or “No Signal.” Always read and follow the installation instructions supplied with the antenna. SiriusXM provides several antenna mounting recommendations for standard magnetic roof-mounted antennas:

- 1) Mount the antenna on the roof where it has a clear view of the sky in all directions.
- 2) Mount the antenna at least three inches away from any other antennas.
- 3) Do not mount the magnetic mount antenna inside the vehicle, such as on the dashboard.
- 4) Do not mount the magnetic mount antenna on the side pillars or sides of the vehicle.
- 5) Do not mount the magnetic mount antenna to any roof racks, luggage racks or spoilers.
- 6) Do not run the antenna cable near sources of heat or moving parts (such as trunk hinges, brake pedals, steering assemblies, etc.)

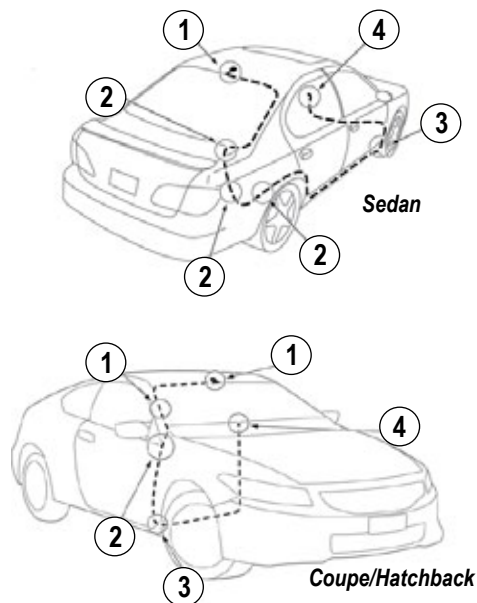


*Antenna Requires a Clear View of the Sky in All Directions*

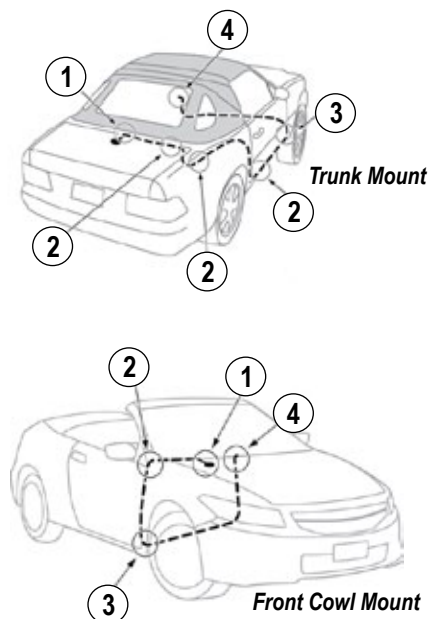
After securing the antenna, route the cable along the recommended path to the interior area near the final location of the Plug and Play controller or hideaway tuner pack. Read the instructions supplied with the antenna. The installation guidelines in the diagrams below provide a general idea of antenna cable routing on most vehicles.

**1)** Feed cable under rubber moulding or trim around the window. **2)** Route the antenna cable out of window moulding and into weather-stripping around the trunk or door jamb. **3)** Route cable under interior trim into the cabin. **4)** Route the cable to the satellite radio tuner location. Coil and secure excess cable under carpet or behind dash.

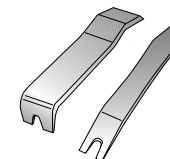
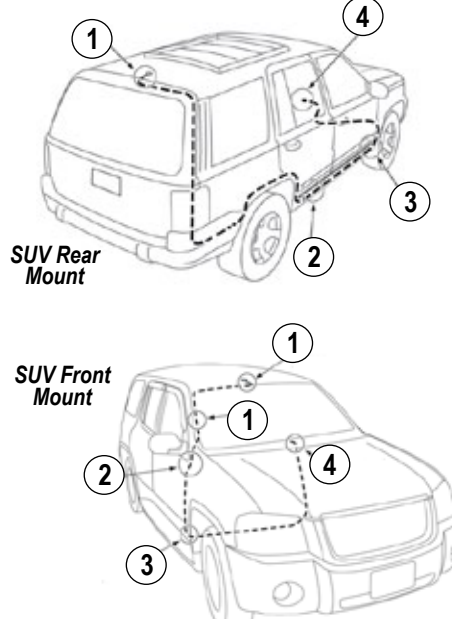
### Sedans and Coupes



### Convertibles

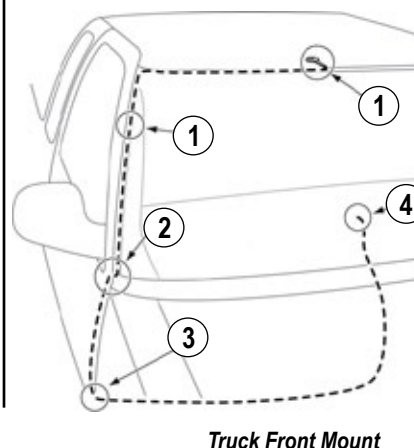


### SUVs



*Use plastic panel tools to tuck the antenna cable under window moulding and trim.*

### Trucks

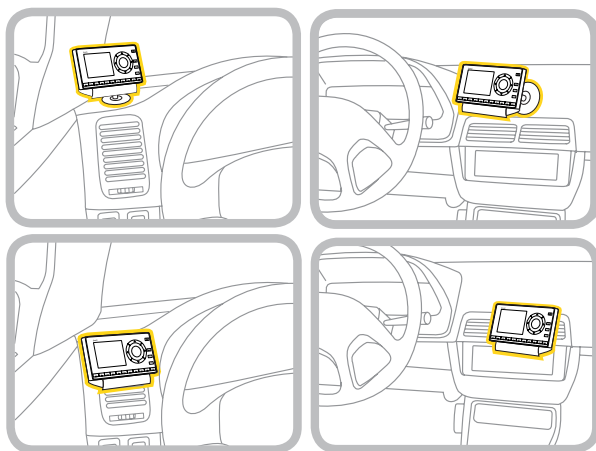


# Interior Disassembly and Unit Installation

## Choose a Location

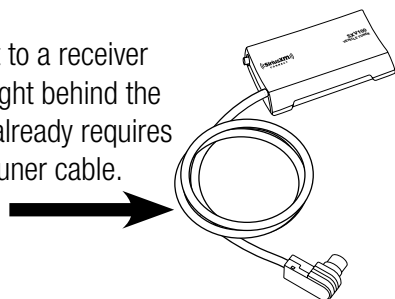
Choose a location to install the Plug and Play satellite radio controller or hideaway tuner box.

- If you are using a Plug and Play controller, select a location where the controller is easily viewed and the buttons are accessible, such as on the dash top, near air vents or alongside the in-dash receiver. Some units may require additional mounting brackets or mounts available on Amazon.com.



Possible Plug and Play Unit Locations

- Tuner boxes that connect to a receiver can be installed out of sight behind the dash since the receiver already requires removal to connect the tuner cable.

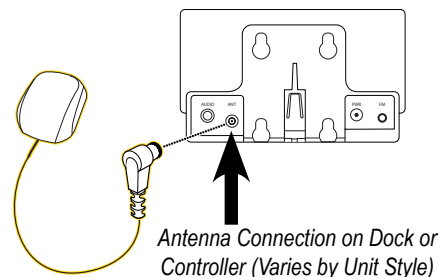


## Disassembly

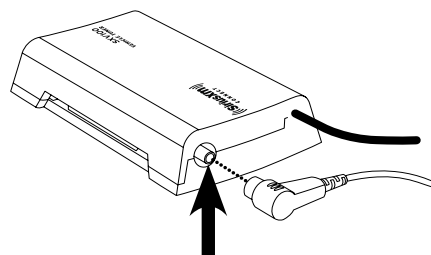
- 1) Remove any interior panels necessary to route wires to the controller or tuner location, including dash panels, glove compartments, or lower dash panels.
- 2) Keep screws and hardware in clearly marked plastic bags or containers. This will ensure each part goes back in the right place during reassembly.

## Antenna Connections

- 1) Finish routing the antenna connection to the location of the Plug and Play controller or hideaway tuner pack. Be sure to avoid running the antenna cable near any heat sources or moving parts. Neatly coil up any excess cable.



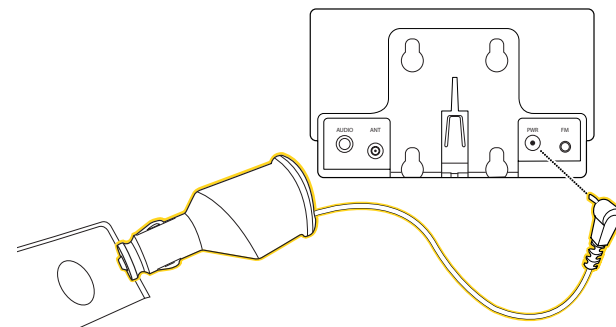
Antenna Connection on Dock or Controller (Varies by Unit Style)



Antenna Connection on Hideaway Tuner

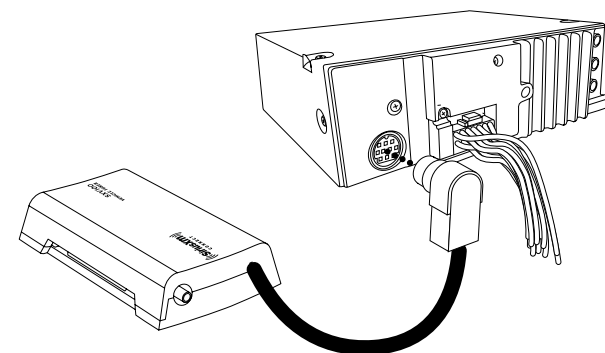
## Power Connections

- 1) For Plug and Play units, connect the supplied power cord to the vehicle's cigarette lighter and plug the other end into the unit (or dock).



Plug and Play Unit Cigarette Lighter Power Adapter

- 2) For hideaway tuner packs, connect the data cable to the in-dash receiver's back panel on the port (or multi-pin plug) marked "SAT" or "Satellite Radio."



Data and Power Connection on Hideaway Tuner  
Note: Tuner style shown is "SiriusXM Ready"

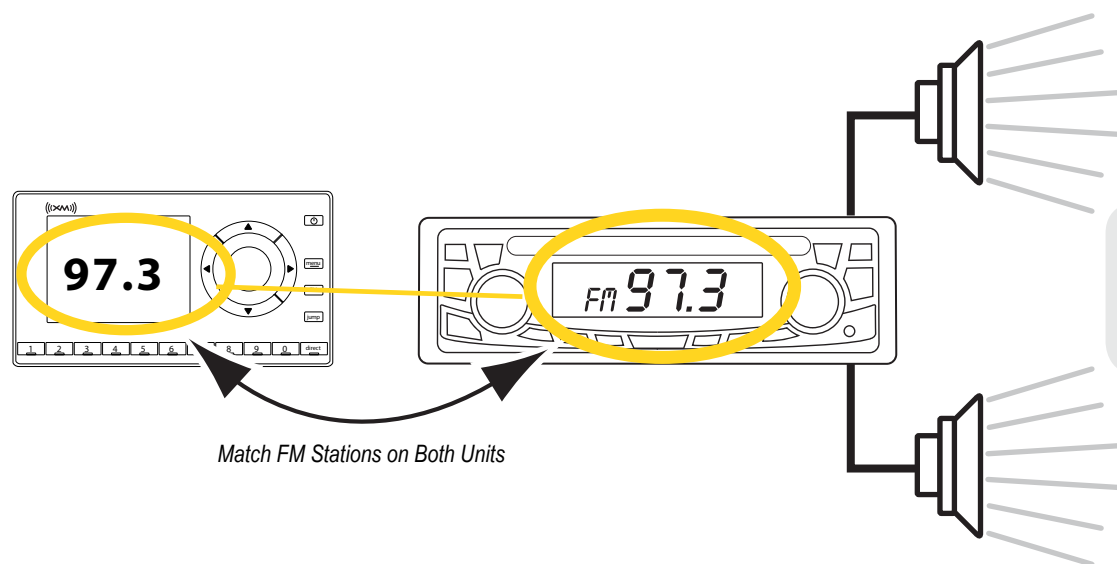
## Audio Connections

### FM Transmitter

The satellite radio signal can be 'modulated' over an FM channel using the built-in wireless FM transmitter of the Plug and Play unit. There is also a wired FM Direct Adapter option that plugs into the vehicle's existing AM/FM antenna wire. While the sound quality of either FM approach is limited to the quality of the existing FM radio, it provides a convenient method for connecting satellite radio programming to the vehicle with minimal difficulty or parts. Some FM Direct Adapter wired connections may require antenna adapters purchased at Amazon.com to complete the installation.

- 1) To use the wireless FM transmitter built into a Plug and Play unit, find an FM channel on the vehicle's receiver with no reception or content. This usually appears as static or silence, which is an indication that the channel is 'free' to accept the wireless FM broadcast from the Plug and Play unit.
- 2) Place the Plug and Play unit on the preview channel (Channel 1) and set the "FM Settings" to match the same FM frequency identified on the car's stereo.
- 3) Verify the satellite radio broadcast is audible on the car's FM station. You can often use several FM station transmitter presets on the Plug and Play unit to optimize sound quality and minimize interference when traveling to other areas. To do so, repeat steps 1-3.
- 4) For specific information about the Plug and Play unit, please refer to the owner's manual in the "Audio Output" section.

For the wired FM Direct Adapter option, follow the instructions included with the device. Please note some vehicles may require antenna adapters to match the antenna plug types on the device with the antenna plugs in the vehicle.



**Note:** When using an FM transmitter to connect with the vehicle's audio system, visit the **SiriusXM FM Channel Finder website** to find vacant FM frequencies in your area to ensure the best listening experience of satellite radio over an FM station. <http://www.siriusxm.com/frequency>.



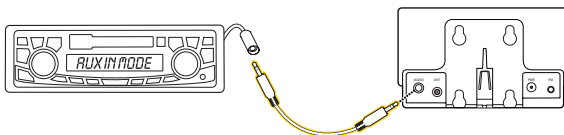
## Audio Connections (Continued)

### AUX Input

The AUX input provides the best sound quality option to listen to satellite radio through an existing stereo. To use this feature, the vehicle must have an AUX input, either a 1/8" mini jack or stereo RCA inputs. You may need to purchase a cable or input adapter on Amazon.com for this connection.



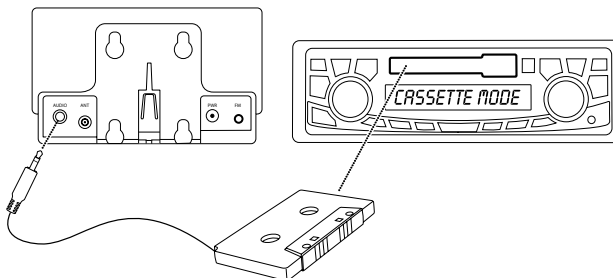
- 1) Insert one end of the cable into the "AUDIO", "AUDIO OUT" or "AUX OUT" port on the Plug and Play controller or dock and the other end into the vehicle's "Auxiliary" or "AUX IN" jack.



**Note:** The vehicle's AUX input jack may be located on the face plate of the receiver, on the back of the receiver, anywhere on the front dash panel, inside the glove compartment, or inside the center console in between the front seats.

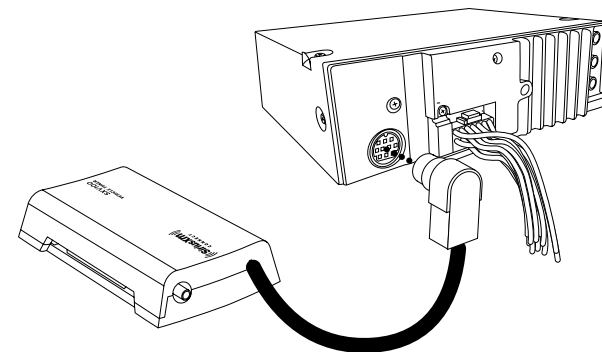
### Cassette Adapter

For vehicles with a cassette player lacking a working FM radio section, a cassette adapter can be used to connect the AUX OUT port on the Plug and Play unit to the cassette adapter. Press "PLAY" on the cassette player to enable audio between the satellite radio unit and the cassette player.



### Direct Connection

If using a hideaway tuner pack, the audio connection is already completed when connecting to the receiver's back panel. No additional audio connections are necessary. The satellite radio sound will come out of the speakers connected to the receiver and/or amplifier(s).



*Data and Power Connection on Hideaway Tuner*

Additional accessories such as auxiliary audio cables, antenna adapters, or controller mounts may be required to complete the installation and are available for purchase on Amazon.com.

## Finishing the Installation

### Verify Operation

Verify the satellite radio broadcast on Channel 1 (Preview Channel) is playing through the stereo, whether over an FM channel or via selecting “Satellite Radio” as the source on the receiver. If the receiver offers signal strength menus, review the owner’s manual for access instructions to verify the quality of signal strength.

### Final Mounting

Securely mount the Plug and Play unit with supplied brackets or docking assembly following the instructions in the manual. If installing a hideaway tuner pack, use zip ties to attach it securely to a vehicle wiring harness in the dashboard area, behind the in-dash receiver.

### Reassembly

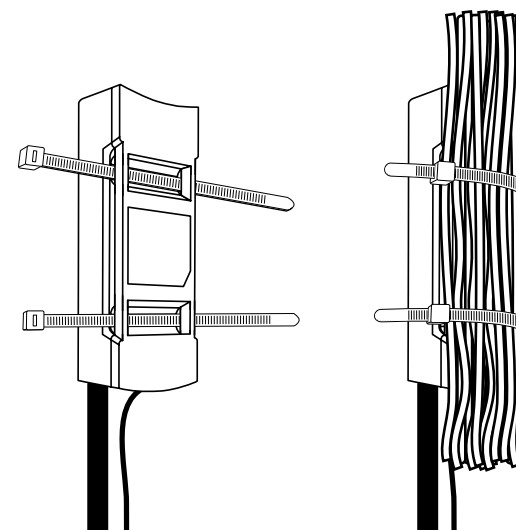
Reassemble any parts of the vehicle that were removed during the satellite radio installation. Double check that all wiring is securely tied down with zip ties and routed away from moving parts or heat sources.

### Activate Subscription

Once installed, you need to select your service plan choices and activate the SiriusXM service by calling 866-635-2349 or visiting <https://care.siriusxm.com>.



*Mounting the Plug and Play Unit with a 'Pro Clip' accessory available on Amazon.com*



*Mounting the Hideaway Tuner with Zip Ties*