

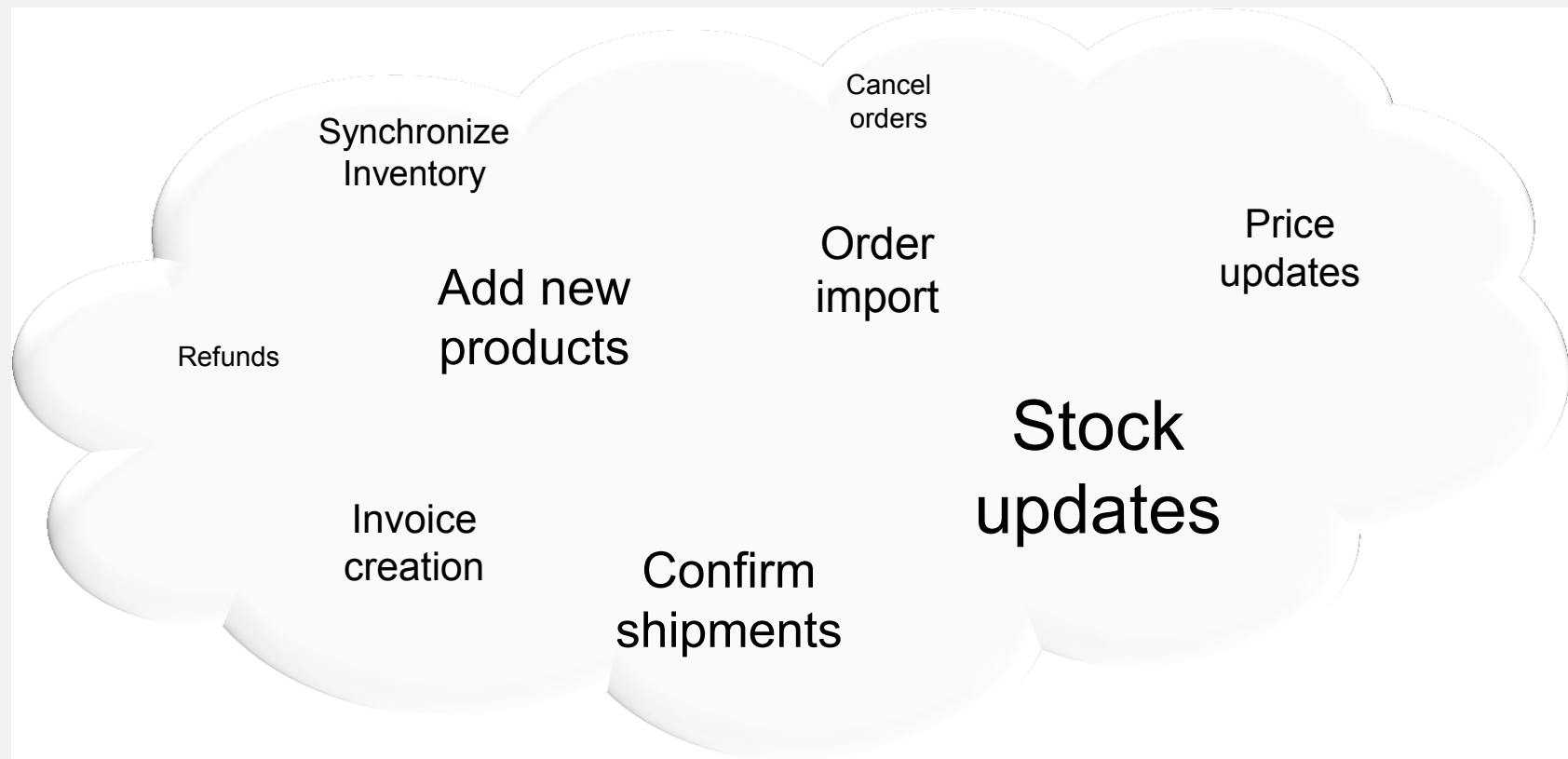
# **Seller Automation Options**

October 2012  
Thomas Münchhausen

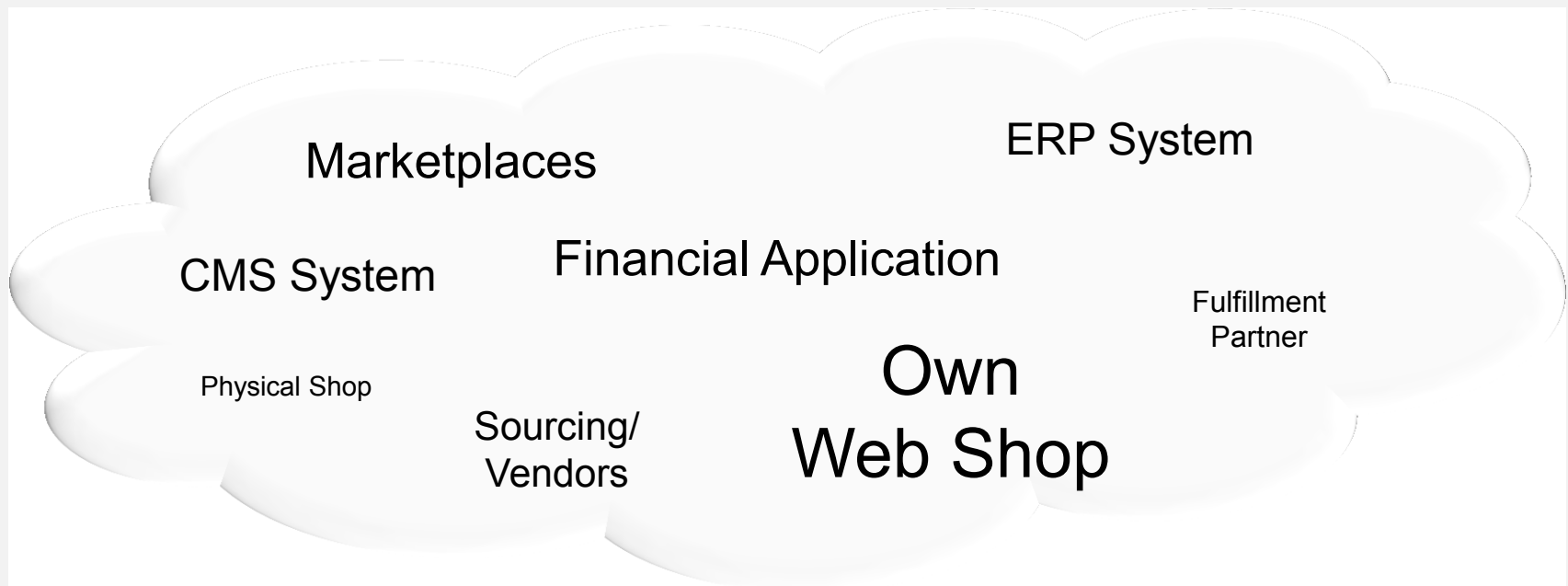
## Agenda

1. Overview on automation options
2. AMTU – Data transport without programming
3. MWS – The seller centric interface for all transactions
4. Automation for European Seller Accounts
5. Integration of *Fulfilment by Amazon*

- **Which processes should get automated?**



- **Which processes should get automated?**
- **What's the sellers current IT environment?**



- **Which processes should get automated?**
- **What's the sellers current IT environment?**
- **What are the available skills for implementing automation?**

What avenues are there for sellers to automate?

- **Amazon Merchant Transport Utility (AMTU)**
- **Own custom development and integration**
- **Off-the-shelf solutions or services  
(Service Integrator tools)**
- **Mix of the above**

## Agenda

1. Overview on automation options
2. AMTU – Data transport without programming
3. MWS – The seller centric interface for all transactions
4. Automation for European Seller Accounts
5. Integration of *Fulfilment by Amazon*

### Amazon Merchant Transport Utility

- **JAVA-based application**
- **Automated data transport between seller and Amazon (XML or TXT)**
- **Supports feed upload and report download**
- **Available for Windows, Linux, Mac environments**





## AMTU 2.x ...

- can be found in Online help of Seller Central.
- can manage more than one seller account from one installation.
- supports Unified Accounts
- receives automatic application updates.
- now supports as well media category feeds.

### Help

#### Configure Account Settings

##### Getting Started

- ◆ Getting Started Guide
- ◆ Selling in Categories
- ◆ Individual Selling Plan
- ◆ Shipping Overview
- ◆ Things You Didn't Know You Needed to Know to Sell on Amazon.co.uk
- ◆ Seller Central Home Page Improvements

##### Tasks & Tools

- ◆ Set-up Instructions
- ◆ Login Settings
- ◆ Update My Account Information
- ◆ Set User Permissions
- ◆ Configure My Shipping Settings
- ◆ Change Subscription or Close Seller Account

##### E-Learning Tutorials

- ◆ Your Info and Policies
- ◆ Shipping settings basics
- ◆ Setting item/weight based shipping rates
- ◆ Setting banded shipping rates
- ◆ Using Your Case Log
- ◆ Seller Central Overview

#### Manage Inventory

##### Getting Started

- ◆ Products and Listings
- ◆ Product UPCs/EANs and GTINs
- ◆ The Catalogue, Categories, and Your Inventory Listings
- ◆ Matching Your Products
- ◆ Sellers eligible to win the Buy Box
- ◆ The Buy Box
- ◆ How the More Buying Choices Box Works
- ◆ The Offer Listing Page
- ◆ The Buy Used Box
- ◆ Selling In Categories

##### Tasks & Tools

- ◆ Add a Product Tool
- ◆ Use Manage Inventory Feature
- ◆ Fix Listings with Missing Information
- ◆ Download & Upload Inventory Files
- ◆ Using AMTU
- ◆ Seller Desktop (TM)
- ◆ Download an Inventory Report
- ◆ Prepare Product Images
- ◆ Creating Product Relationships
- ◆ Condition Types

## Amazon Merchant Transport Utility

Amazon Merchant Transport Utility v2.1.8

Activities Submitted Feeds Retrieved Reports Account Management

**amazon services**

Select an Account to View  
DE Merchant Integration Test...

Select a Site to View  
DEFAULT

**Account Details**

MWS Endpoint:  
Germany

Document Transport Directory:  
C:\Users\thmulamtu2\DocumentTransport

Transport Status:  
Ready

Last Connection Established at:  
Not Available

**AMTU Account Settings**

Document Transport Directory: C:\Users\thmulamtu2\DocumentTransport [Browse](#)

**Marketplace Web Service Authentication**

Access Key ID: AKIAIGXM7JAUTJOKIDIA

Secret Key: .....

Merchant ID: AG4U84DS4JEUJ

You can retrieve your access information from the MWS registration website by clicking on the button on the right.

[Open MWS Website](#)

**Connection Intervals**

Feed Upload Interval (minutes): 2

Feed Results Download Interval (minutes): 2

☐ Disable Report Downloads for this account?

Report Download Interval (minutes): 5

[Delete](#) [Modify](#)

**Site Information**

Site Name: DEFAULT

Site Directory: production

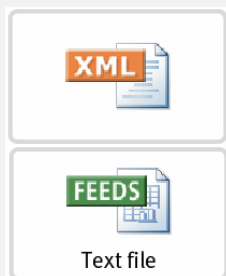
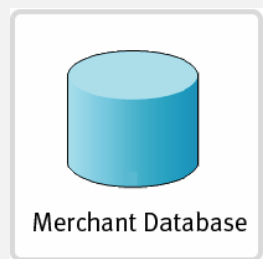
Marketplace ID:

[Delete](#) [Modify](#)

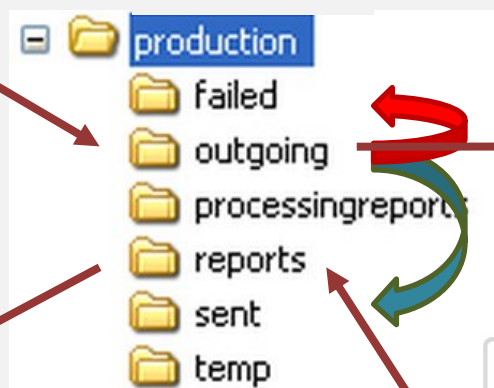
[Add Site](#) [Add Account](#)

## Amazon Merchant Transport Utility

Product-, Price- or Inventory  
Information

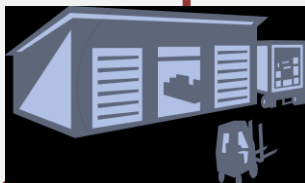
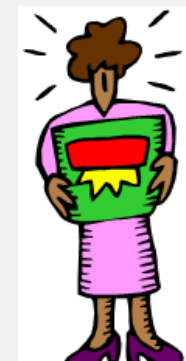


AMTU



amazon

Order Report  
Settlement Report



## Amazon Merchant Transport Utility

Webinar recording at <http://services.amazon.co.uk>

The screenshot shows the Amazon Services Europe website. At the top, the logo "amazon services Europe" is on the left, and navigation links "Contact Us", "Sign Into Your Seller Account", and "Country: FR | DE | IT | ES | US | JP | CN" are on the right. Below the header is a dark blue navigation bar with "Services", "Resources", and "Support" menus. The "Resources" menu is open, showing a list of links: "Video Tutorials", "Seller Support Blog", "Newsletters", "For Developers", and "Events/Webinars". The "Events/Webinars" link is highlighted. To the left of the "Resources" menu is a sidebar with links: "Video Tutorials", "Events/Webinars", "Seller Support Blog", "For Developers", and "Newsletters". Below the navigation bar, the heading "Upcoming Events" is displayed. Underneath, a text block states: "Below are upcoming webinars hosted by the Amazon.co.uk Seller Services team. Feel free to join us!". A specific webinar is featured with the title "Selling on Amazon: Adding Products in Bulk with Inventory Files", the date "13th September 2012 | 10.00-11.00am UK Time (check time zone)", and a registration link: "Feel free to register free of charge for this webinar here: <http://go.amazonservices.com/webinar212519792.html>". The description of the webinar follows, explaining that it will introduce users to inventory files for bulk product creation. A list of topics to be covered is provided, including methods for adding listings and using inventory file templates. The session is noted as a beginner's session.

amazon services  
Europe

Contact Us | Sign Into Your Seller Account | Country: FR | DE | IT | ES | US | JP | CN

Services ▾ Resources ▾ Support ▾

- Video Tutorials
- Events/Webinars
- Seller Support Blog
- For Developers
- Newsletters

- > Video Tutorials
- > Seller Support Blog
- > Newsletters
- > For Developers
- > Events/Webinars

### Upcoming Events

Below are upcoming webinars hosted by the Amazon.co.uk Seller Services team. Feel free to join us!

#### Selling on Amazon: Adding Products in Bulk with Inventory Files

13th September 2012 | 10.00-11.00am UK Time (check time zone)

Feel free to register free of charge for this webinar here: <http://go.amazonservices.com/webinar212519792.html>

We are pleased to invite you to this Selling on Amazon webinar where we will give you an introduction to the inventory files, which allow you to create large numbers of products in bulk in your seller account. Adding as many products as possible to your account is one of the easiest ways to maximise your sales, but it can get tricky to do so manually when you have hundreds or thousands of products in your inventory. Inventory files can help you do so more quickly, easily and accurately.

During this session, an expert from our Listings Creation team will go through:

- The main methods to add listings on Amazon.co.uk
- How to use inventory file templates to add listings in bulk, including a live demonstration
- Recommendations and Q&A

This is a beginner's session.

### Agenda

1. Overview on automation options
2. AMTU – Data transport without programming
3. MWS – The seller centric interface for all transactions
4. Automation for European Seller Accounts
5. Integration of *Fulfilment by Amazon*

- ***The programming interface for all Amazon sellers***
- **Compatible with all current feed & report formats**
- **Various levels of developer support**
  - **Comprehensive documentation**
  - **Libraries & code samples (PHP, Java, C#)**
  - **Developer forum**
  - **Contact form to MWS support**
  - **„Scratchpad“ for developers**
- **Detailed access authorization**
- **Future expansion with new features**

## MWS – Marketplace Web Services

... further details at <http://developer.amazonservices.co.uk>

amazon services  
Europe

## Amazon Marketplace Web Service (Amazon MWS)

(Seller Login Required)

## APIs and Documentation

[Feeds](#)[Reports](#)[Fulfilment Inbound Shipment](#)[Fulfilment Inventory](#)[Fulfilment Outbound Shipment](#)[Orders](#)[Products](#)[Sellers](#)

Amazon Marketplace Web Service (Amazon MWS) is an integrated Web service API that helps Amazon sellers to programmatically exchange data on listings, orders, payments, reports, and more. XML data integration with Amazon enables higher levels of selling automation, which helps sellers grow their business. By using Amazon MWS, sellers can increase selling efficiency, reduce labour requirements, and improve response time to customers.

Amazon MWS supports seller API functions that are broader in scope and functionality than any API functionality previously offered to sellers by Amazon. With Amazon MWS, Amazon listing, order, and payment data can be integrated into existing workflows so that selling on Amazon fits seamlessly with sellers' current business practices.

The Amazon Marketplace Web Service (Amazon MWS) Fulfilment API sections include operations that allow sellers to access Amazon's world-class fulfilment capabilities through a simple Web services interface. Among other features, a seller can programmatically send order information to Amazon with instructions to fulfil customer

Sign up for MWS



## MWS – Marketplace Web Services



### Amazon Marketplace Web Service (Amazon MWS)

- ☐ I want to access my own Amazon seller account with MWS.
- ☐ I want to use an application to access my Amazon seller account with MWS.

Application Name:

Application's Developer Account Number:  For example: 1234-1234-1234, 123412341234

- ☐ I want to give a developer access to my Amazon seller account with MWS.

Developer's Name:

Developer Account Number:  For example: 1234-1234-1234, 123412341234





## MWS – Marketplace Web Services

### Amazon Marketplace Web Service (Amazon MWS)

**Congratulations!**

**You can now access your Amazon Seller account with MWS**

These are your Account Identifiers and Credentials, which you will need to make successful MWS requests.

**Important:** Please do not navigate away from this page until you have made note of these Account Identifiers and Credentials or have printed this page. These Account Identifiers and Credentials will not be emailed to you.

These are your Account Identifiers and Credentials, which you will need to make successful MWS requests.

Seller account identifiers for EU SellerConnection Training 10

Merchant ID: [REDACTED]

Marketplace ID: [REDACTED]

Developer account identifier and credentials for developer account  
number 033-046-0186\*

AWS Access Key ID: [REDACTED]

Secret Key: [REDACTED]

\*If you are developing MWS Applications or otherwise providing MWS-related development services to other sellers, you will need to provide this developer account number to those sellers so that they can authorize you to access their Amazon seller accounts with MWS.

## MWS – Marketplace Web Services

... further details at <http://developer.amazonservices.co.uk>



## Amazon Marketplace Web Service (Amazon MWS)

## Navigation

[About Amazon MWS](#)[Frequently Asked Questions](#)[SOAP and AIM Migration to Amazon MWS  
Frequently Asked Questions](#)[Documentation](#)[Community Forum](#)[Amazon MWS Blog](#)[Amazon MWS Scratchpad](#)[Contact Amazon MWS  
\(Seller Login Required\)](#)

## APIs and Documentation

[Feeds](#)[Reports](#)[Fulfillment Inbound Shipment](#)

## Feeds API Section - Version 2009-01-01

## Description

Amazon MWS supports the management of seller listings for items to be sold on Amazon.com. Listings can be added, deleted, or modified with Amazon MWS. A variety of specialized feed formats are supported to meet a wide range of seller needs. For example, new products can be added to the Amazon catalog by using MWS supported feeds to define new product detail pages on Amazon.com. using a simplified

## Developer

- Amazon
- API Refe
- PHP Clie
- C# Client
- Java Clie
- Communi

## SubmitFeed

Uploads a feed for processing by Amazon MWS.

### Description

The `SubmitFeed` operation uploads a file and any necessary metadata for processing. Note that you must calculate a Content-MD5 header for the submitted file. For more information about creating a Content-MD5 header, see *What you should know about the Amazon MWS Feeds API section*.

The `SubmitFeed` operation has a maximum request quota of 15 and a restore rate of one request every two minutes. For definitions of throttling terminology, see *What you should know about the Amazon MWS Feeds API section*.

Feed size is limited to 2,147,483,647 bytes (2<sup>31</sup> - 1) per feed. If you have a large amount of data to submit, you should submit feeds smaller than the feed size limit by breaking up the data, or submit the feeds over a period of time. One good practice is to submit feeds with a size limit of 30,000 records/items or submit feeds over a period of time, such as every few hours.

### Maximizing feed performance

You can generally get the best overall feed processing performance by following these guidelines:

- Avoid submitting a lot of feeds with only a few records in each feed. When possible, combine the data into less frequent larger feeds.
- Include only the products you are updating, not your entire inventory.
- Upload one feed of the same type no more than once every 20 minutes. Allow more time between larger feeds.
- Keep file size below 10 MB

### Listing Reports

GET_FLAT_FILE_OPEN_LISTINGS_DATA_
GET_MERCHANT_LISTINGS_DATA_BACK_COMPAT_
GET_MERCHANT_LISTINGS_DATA_
GET_MERCHANT_LISTINGS_DATA_LITE_
GET_MERCHANT_LISTINGS_DATA_LITER_
GET_MERCHANT_CANCELLED_LISTINGS_DATA_
GET_MERCHANT_LISTINGS_DEFECT_DATA_

### Order Reports

GET_FLAT_FILE_ACTIONABLE_ORDER_DATA_
GET_ORDERS_DATA_
GET_FLAT_FILE_ORDER_REPORT_DATA_
GET_FLAT_FILE_ORDERS_DATA_

### Order Tracking Reports

GET_FLAT_FILE_ALL_ORDERS_DATA_BY_MERCHANT_DATES_
GET_FLAT_FILE_ALL_ORDERS_DATA_BY_MERCHANT_DATES_
GET_XML_ALL_ORDERS_DATA_BY_MERCHANT_DATES_
GET_XML_ALL_ORDERS_DATA_BY_MERCHANT_DATES_

### Performance Reports

GET_SELLER_FEEDBACK_DATA_
---------------------------

### Settlement Reports

GET_FLAT_FILE_PAYMENT_SETTLEMENT_DATA_
GET_PAYMENT_SETTLEMENT_DATA_
GET_ALT_FLAT_FILE_PAYMENT_SETTLEMENT_DATA_

### FBA Reports

GET_AFN_INVENTORY_DATA_
GET_AMAZON_FULFILLED_SHIPMENTS_DATA_
GET_FBA_FULFILLMENT_CUSTOMER_RETURNS_DATA_
GET_FBA_FULFILLMENT_CUSTOMER_SHIPMENT_SALES_DATA_
GET_FBA_FULFILLMENT_CUSTOMER_SHIPMENT_PROMOTION_DATA_
GET_FBA_FULFILLMENT_CURRENT_INVENTORY_DATA_
GET_FBA_FULFILLMENT_MONTHLY_INVENTORY_DATA_
GET_FBA_FULFILLMENT_INVENTORY_RECEIPTS_DATA_

### FBA Inventory Health Report

\_GET\_FBA\_FULFILLMENT\_INVENTORY\_HEALTH\_DATA\_  
API operation: [RequestReport](#)

Seller Central sellers.

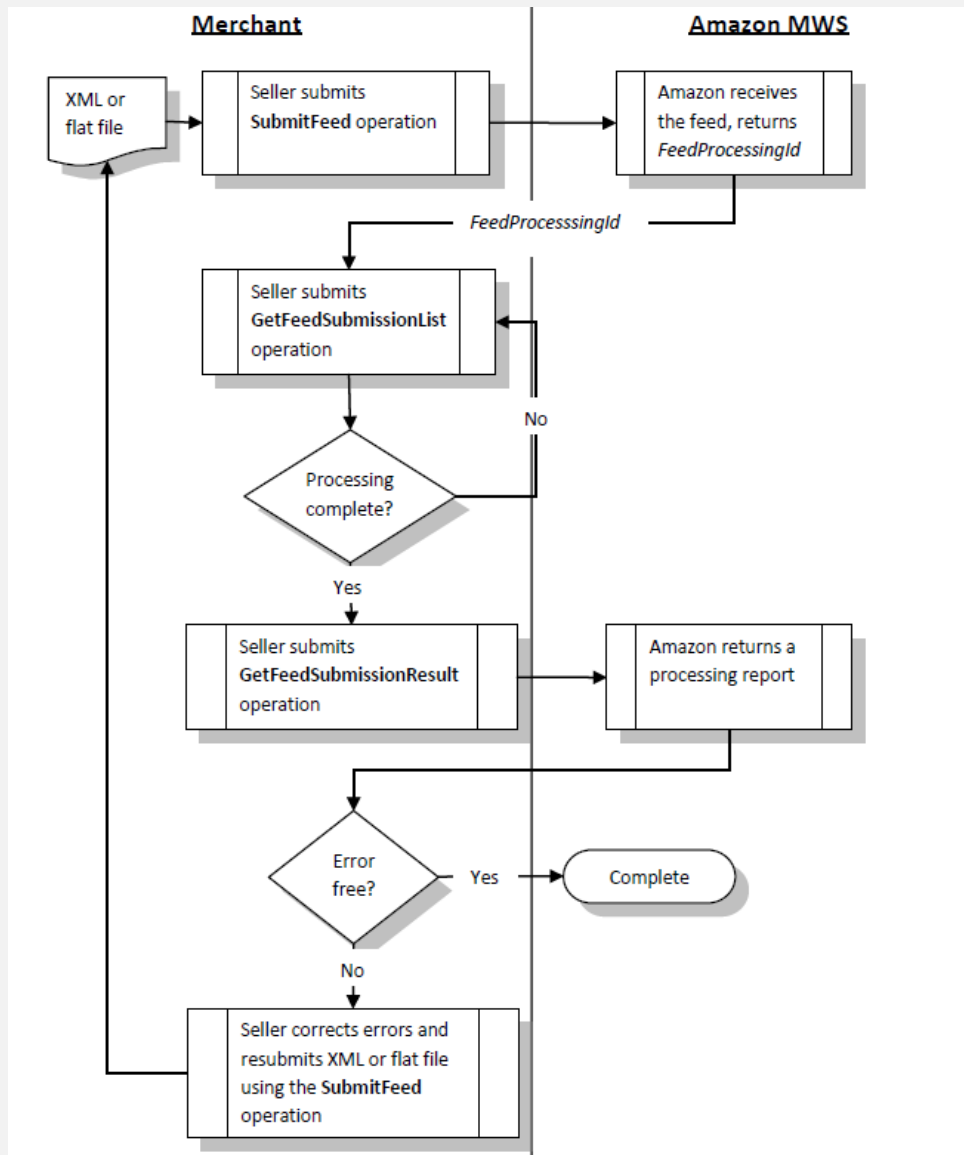
Tab-delimited flat file Amazon-fulfilled shipments report. Contains information about inventory age, condition, sales volume, weeks of cover, and price. **Content updated daily.** For FBA Sellers only. For Marketplace and Seller Central sellers.

FBA Manage

GET\_FBA\_MYI\_UNSUPPRESSED\_INVENTORY\_DATA

Tab-delimited flat file FBA

## MWS Operation Choreography Example



## MWS – Scratchpad

## Amazon MWS Scratchpad

[Amazon MWS Home](#) | [Help](#)

## API Selection

API Section: Operation: 

## Authentication

Merchant ID: AWS Access Key ID: Secret Key: 

Note: Never enter your MWS credentials into a non-Amazon site.

[More...](#)

## Required API Parameters

ReportType: 

## Optional API Parameters

MarketplaceIdList.Id.1 StartDate EndDate ReportOptions 

## Response

## Request Details

## HTTP POST

```
POST /?AWSAccessKeyId=AKIAIGXM7JAUTJOKIDIA
&Action=RequestReport
&Merchant=A2J6O3A4UT7E4L
&SignatureVersion=2
&Timestamp=2011-09-01T13%3A06%3A48Z
&Version=2009-01-01
&Signature=U7%2F8p%2F1ovOqsCaN%2BLt9gAQRXjAhZJcNBt7SnXd4KHM%3D
&SignatureMethod=HmacSHA256
&ReportType=_GET_ORDERS_DATA_ HTTP/1.1
Host: mws.amazon.com
x-amazon-user-agent: AmazonJavascriptScratchpad/1.0 (Language=Javascript)
Content-Type: text/xml
```

## String to sign

```
POST
mws.amazon.com
/
AWSAccessKeyId=AKIAIGXM7JAUTJOKIDIA&Action=RequestReport&Merchant=A2J6O3A4UT7E4L&ReportType=_GET_ORDERS_DATA_&SignatureMet
```

SHA 256 HMAC	53bffca7fd68bceaac09a37e2db4fd8004115e302164970d06ded29d77782873
Base64 HMAC	U7/8p/1ovOqsCaN+LbT9gAQRXjAhZJcNBt7SnXd4KHM=

© 2010, Amazon.com, Inc. or its affiliates. All rights reserved.

### Agenda

1. Overview on automation options
2. AMTU – Data transport without programming
3. MWS – The seller centric interface for all transactions
4. Automation for European Seller Accounts
5. Integration of *Fulfilment by Amazon*

## Automation for European unified accounts

With the Europe Marketplaces Account, you can:

- list your offers on **multiple European Amazon Marketplaces** and
- reach millions of **new shoppers**



- **Products have to be listed in local language**
- **FlatFile feeds can only be applied to one country.**
- **Price feeds require same currency on target marketplaces.**
- **Inventory feeds update SKU quantities on all EU marketplaces.**



- **Single order report for all marketplaces**
- **Sellers must be ready for multiple currencies**
- **„Sales-Channel“ column available for FF reports (not yet for XML)**
- **Shipping confirmation feeds may include orders from multiple marketplaces.**

### Agenda

1. Overview on automation options
2. AMTU – Data transport without programming
3. MWS – The seller centric interface for all transactions
4. Automation for European Seller Accounts
5. Integration of *Fulfilment by Amazon*

## Integration of FBA

- Suggested integration steps:

- Flag FBA items in own product data (avoid inactive exchanges)

show: ✓ = Low Price for li

**My Inventory**  
All My Inventory  
Active  
Inactive

**Improve Listing Quality**

	Actions	Status	Merchant SKU	ASIN/ISBN	Product Name	Date Created	Quantity	Condition	Y
<input type="checkbox"/>	▼		▼		▼	▼	▼		
<input type="checkbox"/>	Actions ▼	Active	Dell000002	B0029MH1Y0	Dell Dimension 5100 MT Power Supply	17/11/2011 16:16:56	<input type="text" value="5"/>	New	£
<input type="checkbox"/>	Edit Details Manage product images			B0029M9UJE	Dell Optiplex GX620 MT Power Supply	17/11/2011 16:16:46	<input type="text" value="5"/>	New	£
<input type="checkbox"/>	Change to Fulfilled by Amazon Close listing Delete product and listing			B0008EJ22K	Wileco 825	29/09/2011 17:11:20	<input type="text" value="0"/>	New	£
<input type="checkbox"/>	Copy to a new product Add another condition			B004YH2ZCG	Wii Play: Motion Plus Wii Remote - Red [Nintendo Wii]	05/09/2011 13:56:59	<input type="text" value="0"/>	New	£

[Rate this page](#) | [Contact Seller Support](#)

Request served by: myi-gui-pr

	A	B	C	D	E	F	G	H	I	J
1	Template Version=1 This row for Amazon.com use only. Do not modify or delete.									
2	sku	item-price	currency	quantity	update-delete	sale-price	sale-from-date	sale-through-date	leadtime-to-ship	fulfillment-center-id
3	FBA_123	2225.99	GBP		Update					AMAZON_EU
4	FBA_124	2225.99	GBP		Update					AMAZON_EU

## Integration of FBA

- **Suggested integration steps:**
  2. Import FBA order and shipment data
  3. Creation of VAT invoices for FBA customers

amazon services europe seller central

www.amazon.co.uk

HOME | MESSAGES | HELP | LOGOUT

INVENTORY ORDERS STOREFRONT REPORTS PERFORMANCE SETTINGS

Merchant: [DE Merchant Integration Test 1](#)

**Fulfilment Reports**

Reports for your Amazon-Fulfilled inventory and sales are available here. Visit [Payments](#) for transactions and settlement reports, regardless of the fulfilment method.

Report

Amazon Fulfilled Shipments Comprehensive details on dispatches

View Online Download

Event Date: last day (yesterday)

**Request Download**

**Payments**  
Amazon Selling Coach  
Business Reports  
**Fulfilment by Amazon**

POST /?AWSAccessKeyId=XXXXXXXXXXXXX  
&Action=RequestReport  
&Merchant=XXXXXXXXXXXXX  
&SignatureVersion=2  
&Timestamp=2012-10-11T13:3A29:3A46Z  
&Version=2009-01-01  
&Signature=Eby9roRThTiX%2FmxftQQ01zKWaNiLONpnq0oMMGKI%2Fzs%3D  
&SignatureMethod=HmacSHA256  
**&ReportType=\_GET\_AMAZON\_FULFILLED\_SHIPMENTS\_DATA\_**  
&StartDate=2012-10-08T22:3A00:3A00Z

**IMPORTANT NOTICE**  
Your order reports now include an e-mail address that you may use to contact your buyer regarding your transaction with the buyer. Please note that if you choose to use this e-mail address to communicate with your buyer, that e-mail message and all further communications between you and your buyer using this service will be copied and stored by Amazon. By using this service, you

- Suggested integration steps:

- 4. Monitoring of FBA stock levels

**Request:**

```
POST /FulfillmentInventory/2010-10-01?AWSAccessKeyId=AAAAAAAAAAAAAAAA
&Action=ListInventorySupply
&SellerId=AAAAAAAAAAAAAAAA
&SignatureVersion=2
&Timestamp=2012-10-11T13:34:13Z
&Version=2010-10-01
&Signature=lg8UAtU1EeDpF8XqDMF8L1h8BEvUjQM3uI6riWXxc%2F4%3D
&SignatureMethod=HmacSHA256
&SellerSkus.member.1=1234
&ResponseGroup=Detailed
```

**Response:**

```
<ListInventorySupplyResponse xmlns="http://mws.amazonaws.com/FulfillmentInventory/2010-10-01/">
  <ListInventorySupplyResult>
    <InventorySupplyList>
      <member>
        <SellerSKU>1234</SellerSKU>
        <TotalSupplyQuantity>0</TotalSupplyQuantity>
        <InStockSupplyQuantity>0</InStockSupplyQuantity>
      </member>
    </InventorySupplyList>
  </ListInventorySupplyResult>
  <ResponseMetadata>
    <RequestId>cdd78957-06b0-40c2-88d5-24df5656945f</RequestId>
  </ResponseMetadata>
</ListInventorySupplyResponse>
```

## Integration of FBA

- Suggested integration steps:

- 5. Integrated triggering of FBA multichannel fulfillment orders

amazon services europe seller central www.amazon.co.uk HOME | MESSAGES | HELP | LOGOUT

INVENTORY ORDERS STOREFRONT REPORTS PERFORMANCE SETTINGS Search GO

Merchant: [DE Merchant Integration Test 1](#)

[All Inventory View](#) | [Inventory Amazon Fulfills](#) | [Shipping Queue](#)

### Multi-Channel Fulfilment Order

Enter the shipping address, order ID, and packing slip information for your order. Verify that each item and ordered amount are correct. When you're done, click "Continue" to see available shipping options and fee estimates. [Learn more](#)

**Note:** Fields with \* are required.

**Create Order with Flat File**  
Bulk create Multi-Channel Fulfilment order requests by uploading a flat file.  
[Upload Flat File](#)

**Provide Details** Review & Place Order

**1 Ship To Address** (Only domestic postal address)

Full Name: \*  
Address Line1: \*  
Address Line2:  
City: \*

### Upload Multi-Channel Fulfilment File

[Create Order](#) | [Cancel Order](#)

#### 1. Prepare Your Create Order File

Prepare your Create Order File using a new Create Order File Template. Click the button to download the template. [Learn more.](#)

[Download Template](#)

#### 2. Upload Your Create Order File

Upload the tab-delimited Create Order File you created from your Create Order File Template.

Locate File to Upload: [Browse...](#)

[Upload Now](#)

## Integration of FBA

## • Suggested integration steps:

## 6. Initial shipment creation via feed, completion in Seller Central

amazon services europe seller central

www.amazon.co.uk

HOME | MESSAGES | HELP | LOGOUT

INVENTORY | ORDERS | STOREFRONT | REPORTS | PERFORMANCE | SETTINGS

Search

GO

Test 1

Shipping Queue | Inbound Compliance Summary New | Scan & Ship | Upload Inbound Shipment File

Manage Inventory

Manage FBA Inventory

Add a Product

Upload Products & Inventory

Download Inventory File

Manage Promotions

Manage FBA Shipments

Create Inbound Shipment

Download

2. Upload Your Create Inbound Shipment File

Upload the tab-delimited Create Inbound Shipment File you created from y

POST /?AWSAccessKeyId=AxXXXXXXXXXXXXXXXXXXXXX  
&Action=SubmitFeed  
&Merchant=AxXXXXXXXXXXXXXXXXXXXXX  
&SignatureVersion=2  
&Timestamp=2012-10-11T13:30:58.3A16Z  
&Version=2009-01-01  
&Signature=gMSE%2FbmxXuvoJuyjiwWCTufSUTnmj  
&SignatureMethod=HmacSHA256  
&FeedType=\_POST\_FLAT\_FILE\_FBA\_CREATE\_INBOU

address 2  
12345 address city  
Germany

Shipment Contents: 1 SKU, 5 Units  
Shipment Status: CLOSED  
Amazon Reference ID: Q2429427  
Ship To: Bad Hersfeld, 36251, DE (FRA3)  
Shipping Carrier: Not provided

Physically preparing your shipment

- Use approved packing materials, such as foam, air pillows and full sheets of paper to secure your units for shipment.
- Ensure the packing slip will be visible when the box is opened.

Learn more

Set Quantity | Select Carrier | Prepare Shipment | Provide Details | Label Shipment | Summary

Prepare Shipment

Include a packing slip inside each box you send to an Amazon fulfilment centre. Enter the number of boxes you are sending and click the "Print Packing Slips" button. [Learn more](#)

1 Print Packing Slips for each box

Number of packing slips:

Paper type: Plain Paper

Print Packing Slips

2 Pack your boxes

- Carefully pack your items in each box.
- Place the packing slip on top of the items in each box.
- Seal the box.

- **Suggested integration steps:**

1. Flag FBA items in own product data (avoid inactive exchanges)
2. Import FBA order and shipment data
3. Creation of VAT invoices for FBA customers
4. Monitoring of FBA stock levels
5. Integrated triggering of FBA multichannel fulfillment orders
6. Initial shipment creation via feed, completion in Seller Central
7. Support for item stickering in a „scan and print“ fashion
8. Complete end-to-end inbound shipment creation